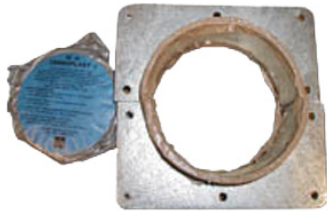




WF-550
Wall feed through

These innovative Wall feed through system feature a design which reduces installation time. Each WF-Kit contains a rubber wall gland which fit inside the mounting plate to hold the coax in place, butyl sealing compound and a tension clamp with two bolts.



Technical features

STRUCTURE

Product Type	Wall/Roof Feed-Through System
Coaxial Cable Type	Air Dielectric
Cable Size	5-1/2"

MECHANICAL SPECIFICATIONS

Feed-Through Holes	1
--------------------	---

PACKAGING INFORMATION

Package Quantity	1
------------------	---

External Document Links

Notes