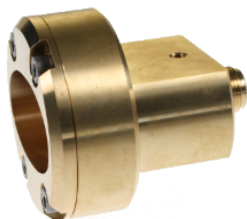


**NF-RE60****Elliptical Waveguide to Type N Female Coax Adapter**

The high performance coaxial cable to waveguide adapter is specifically designed to provide the highest quality interface while simplifying and speeding up the attachment of connectors to the RADIAFLEX® radiating waveguide RE60. The connector provides outstanding value to users because they permit quick, easy and reliable installation at any location, thereby allowing the operator flexibility while saving installation time.

**Feature / Benefits**

- **Waveguide installation** - the flange adapter provides proper matching of elliptical waveguide flanges to N-female connector.
- **Time-saving and easy installation** - reliable and simple attachment avoids unnecessary connector adjustments and provides outstanding performance. Saves time and provides cost savings.
- **Robust mechanical design** - ideally for in-tunnel applications.
- **Excellent electrical performance** - low VSWR
- **Totally waterproof** - assures safe, long term operation.

**Technical features****GENERAL SPECIFICATIONS**

Cable Size	RE60
Connector Interface	N female
Connector Type	Axially in the direction of the installed waveguide
Sealing Method	Shrinking Sleeve

**TESTING AND ENVIRONMENTAL**

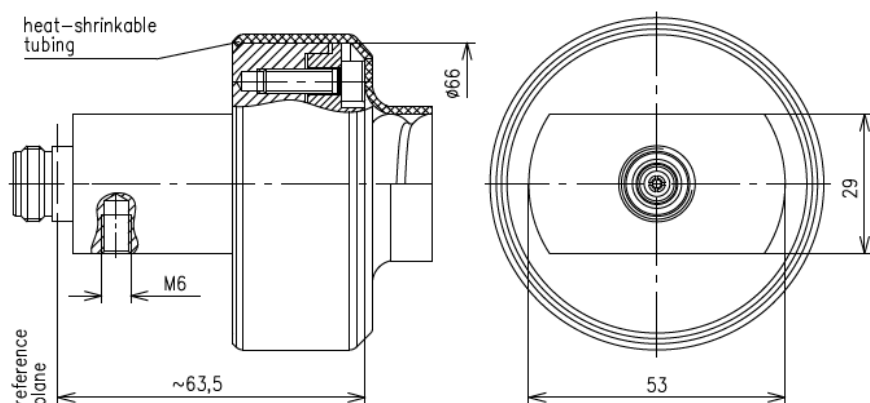
Waterproof Level	IP68
------------------	------

**MECHANICAL SPECIFICATIONS**

Plating Outer/Inner	Brass
Length	75mm (2.95in)
Outer Diameter	69mm (2.72in)

**ELECTRICAL SPECIFICATIONS**

Nominal Impedance	50 ohms	
Frequency Range	VSWR value	Return Loss value
5.0 < f ≤ 6.0 GHz	1.12	24.9



all dimensions in millimeter



**NF-RE60**

Elliptical Waveguide to Type N Female Coax Adapter

External Document Links

Notes

Power Rating: 10 Watt  
Earthing: via M6 screw