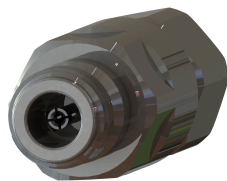




**NF-LCF38-E01**

**N Female Straight Connector for 3/8" Coaxial Cable, OMNI FIT™ Premium**



OMNI FIT™ high performance connectors are designed for use with both CELLFLEX® (copper) and CELLFLEX® Lite (aluminium) cables. They are designed specifically to provide the highest quality connector-cable interface while simplifying and speeding up connector attachment. All RFS connectors are fully tested for mechanical and electrical compliance to industry specifications. The N connector meets all technical requirements and covers high frequencies as well as legacy applications. Sealing against outer conductor and jacket by means of o-ring and 360° compression fit.

**Feature / Benefits**

- Ultra high PIM performance i.e. reduced interference leading to high customer satisfaction
- Two-piece design i.e. visual inspection of interlocking leads to improved installation security
- OMNI FIT™ concept i.e. streamlined order management and reduced stock level
- Watertight sealing in mated and unmated condition, i.e. reduced efforts during installation and improved security during operation
- Tri metal alloy plating i.e. extreme resistance against corrosion even under hardest climatic and environmental circumstances
- Multi-thread (Tristart) design i.e. simplified and accelerated tightening process
- RoHS (EU) and CRoHS (China) compliant i.e. can be used on a global basis

**Technical features**

**GENERAL SPECIFICATIONS**

Cable Size	3/8
Cable Type	Foam Dielectric
Connector Interface	N
Connector Type	OMNI FIT™ PREMIUM Straight
Sealing Method	O-ring + 360° Compression

**TESTING AND ENVIRONMENTAL**

Waterproof Level	IP68
------------------	------

**MECHANICAL SPECIFICATIONS**

Plating Outer/Inner	Tri metal alloy/Silver
Length	65mm (2.559in)
Outer Diameter	24mm (0.945in)
Inner Contact Attachment	Basket
Outer Contact Attachment	Spring Finger

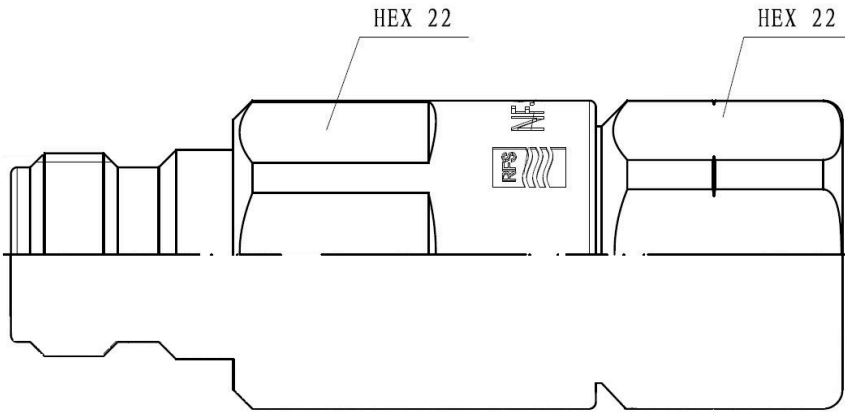
**ELECTRICAL SPECIFICATIONS**

Nominal Impedance	50 ohms	
3rd Order IM Product @ 2x20 Watts	-163 ; typical -167	
Maximum Frequency	6 GHz	
Frequency Range	VSWR value	Return Loss value
0 < f ≤ 1.0 GHz	1.02	40
1.0 < f ≤ 2.2 GHz	1.03	37
2.2 < f ≤ 2.7 GHz	1.03	37
2.7 < f ≤ 3.8 GHz	1.08	28
3.8 < f ≤ 5.0 GHz	1.15	23
5.0 < f ≤ 6.0 GHz	1.22	20



**NF-LCF38-E01**

N Female Straight Connector for 3/8" Coaxial Cable, OMNI FIT™ Premium



External Document Links

Notes