



HDC-114-110-01

Heavy duty clamp for RADIAFLEX® 1-1/4"



Train and metro tunnels are usually narrowly shaped leaving only little space between the cross section of the tunnel and the volume filled by the train. Depending on the speed of the train, those turbulences create forces onto the cable, which the installation material has to withstand. For speeds above 140 km/h (86 mph) up to 350 km/h (218 mph) or even more it is recommended to use the heavy duty clamp HDC which is available for the cable sizes of 1-1/4" and 1-5/8" of all RADIAFLEX® cable with copper foil as outer conductor. The heavy duty clamp already includes the fastening mechanic for the radiating cable. Optionally, the clamp is equipped with four ports to carry additional clic clamps. Clic-clamps could be mounted for installation of fiber optic backbone cables. Suitable types are CC-12-1 and CC-78-1. They can directly be mounted without any tools and further accessories.

Feature / Benefits

For train speeds of up to 350 km/h (218 mph), polyamide black, fire class UL 94HB, halogen free

Technical features

GENERAL SPECIFICATIONS

Product Type	Hanger
Hanger Type	Heavy duty clamp
Cable Type	Radiating Cable
Color	Black

TESTING AND ENVIRONMENTAL

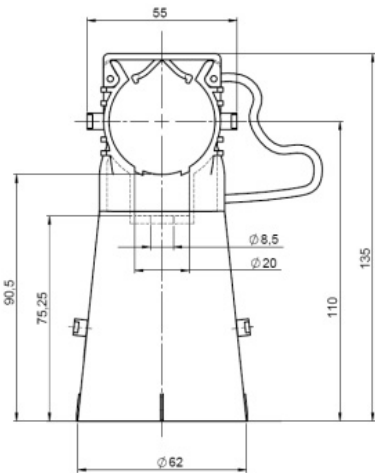
Fire Class	UL94 HB
------------	---------

MECHANICAL SPECIFICATIONS

Cable Size	1-1/4
Material	Polyamide

PACKAGING INFORMATION

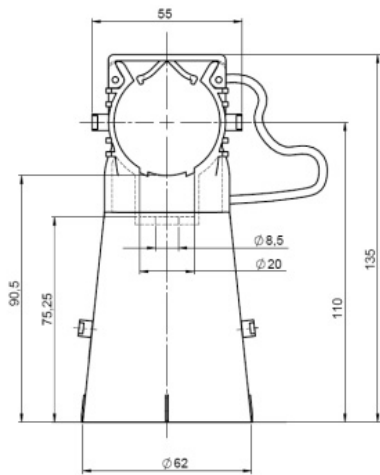
Package Quantity	1
------------------	---





HDC-114-110-01

Heavy duty clamp for RADIAFLEX® 1-1/4"



External Document Links

Notes