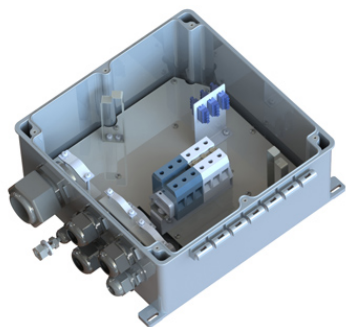


**DBOH-3Z6SL-JH**

HYBRIFLEX® Distribution Box, 3 Pairs DC, 12 Pairs Optical Fiber, for Tower, Pole or Wall Mounting, IP65



RFS' HYBRIFLEX Remote Radio Head (RRH) hybrid feeder cabling solution combines optical fiber and DC power for RRHs in a single lightweight aluminum corrugated cable, making it the world's most innovative solution for RRH deployments. It was developed to reduce installation complexity and costs at Cellular sites.

The HYBRIFLEX Distribution Box is part of the cabling solution for Remote Radio Units. It may be mounted on a tower, rooftop or other suitable location near the RRUs and acts as an interface between the riser cable and the jumper cables.

Feature / Benefits

- Configured for 1 hybrid riser in, 3 DC power jumpers and 3 fiber jumpers out
- IP65 rated enclosure, allowing for indoor or outdoor installation on a roof or tower top
- M12 pressure equalizing breather valve
- Ground column
- Mounting hardware included
- RoHS Compliant

Technical features**MECHANICAL SPECIFICATIONS**

Material	UV resistant ABS and Polycarbonate
Dimensions (LxWxD)	345 x 314 x 150 (13.57 x 12.38 x 5.91)
Mounting	Pole or Wall
Type of F/O Patch Panel	LC-4A Adapter
Type of DC Terminal	Screw terminal

CABLES SUPPORTED

Number of Riser Cables supported	1
Diameter of Riser Cable	7/8 or 1-1/4
Supported F/O Connections	12 pairs DLC
Supported DC Connections	3 pairs
Number of Cables supported	6
Diameter of Jumper Cable	21.5mm (0.85in)

ELECTRICAL SPECIFICATIONS

Protection Class	IP65
------------------	------



DBOH-3Z6SL-JH

HYBRIFLEX® Distribution Box, 3 Pairs DC, 12 Pairs Optical Fiber, for Tower, Pole or Wall Mounting, IP65

NO.	ITEM
1	Distribution box body
2	Metal plate
3	LC-4A adaptor
4	Power terminal strip
5	Fiber cable clamps
6	Cable mounting clamps
7	Cable gland M50
8	Cable gland M32
9	Cable gland M25 (3×Φ7)
10	Grounding column gland
11	Grounding column
12	Breather valve