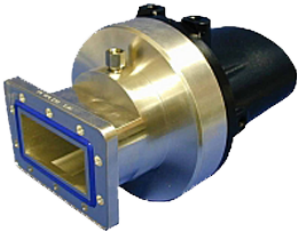




D32-030FP-U

Connector for FLEXWELL® elliptical waveguide E30, PDR32 Flange



Standard connector for FLEXWELL® elliptical waveguide E30 with PDR32 flange, Plast 2000 sealed
frequency range: 2.7 - 3.1 GHz

Feature / Benefits

Superior Design

- Due to the precise manufacturing no tuning screws are necessary
- The terminations are silver plated for good electrical performance
- A gas inlet is included

Quick & Easy Installation

- No tuning in the field

Technical features

STRUCTURE

Transmission Line Type	Elliptical Waveguide
Cable Type	E30
Model Series	E30 Series
Connector Frequency Range	2.7 - 3.1
Connector Type	Fixed
Sealing Method	Plast 2000
Plating Outer/Inner	silver plated
Waterproof Level	IP68
Gas Inlet	M12x1.5 and Adaptor to G 1/8
Connector Interface	PDR32

MECHANICAL SPECIFICATIONS

Length	235mm (9.3in)
Outer Diameter	145mm (5.7in)
Weight	9kg (19.8lb)
Sealing Volume	120cm ³ (3.38ounces)

External Document Links

Notes

Sealing component PLAST 2000 is **not** part of the connector delivery and must be ordered separately.