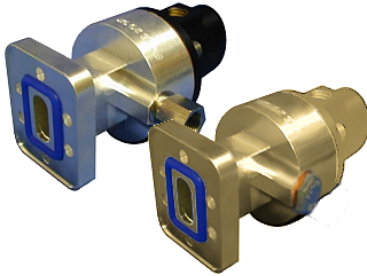




D120-150FP

Connector for FLEXWELL® elliptical waveguide E150, PDR120 Flange



Standard connector for FLEXWELL® elliptical waveguide E150
with PDR120 flange, Plast 2000 sealed
frequency range: 13.4 - 14.5 GHz

Feature / Benefits

Superior Design

- Due to the precise manufacturing no tuning screws are necessary
- The terminations are brass passivated for good electrical performance
- A gas inlet is included

Quick & Easy Installation

- Different flaring tools are available
- No tuning in the field

Technical features

STRUCTURE

Transmission Line Type	Elliptical Waveguide
Cable Type	E150
Model Series	E150 Series
Connector Frequency Range	13.4 - 14.5
Connector Type	Fixed
Sealing Method	Plast 2000
Plating Outer/Inner	Brass
Waterproof Level	IP68
Gas Inlet	G 1/8
Connector Interface	PDR120

MECHANICAL SPECIFICATIONS

Length	85mm (3.4in)
Outer Diameter	45mm (1.8in)
Weight	0.4kg (0.88lb)
Sealing Volume	20cm ³ (0.68ounces)

External Document Links

Notes

Sealing component PLAST 2000 is **not** part of the connector delivery and must be ordered separately.