

**78EIA-LCF12-060**

7/8" EIA Connector for 1/2" Coaxial Cable, RAPID FIT™ Sealing compound



Radio Frequency Systems' line of high performance coaxial cable connectors are designed specifically to provide the highest quality connector-cable interface while simplifying and speeding up the attachment of connectors to CELLFLEX® coaxial cables. RFS connectors are fully tested for mechanical and electrical compliance specifications. They are available in all popular cable sizes in a variety of mating interfaces. To join two cables with EIA connectors, two identical socket connectors are installed on either end of the cables to be joined, and a coupling element is used to make the connection of the center conductor. The coupling element must be ordered separately. Connectors are available in sizes matching the nominal cable size. EIA connectors provide optimal power handling for the complete transmission line system.

Feature / Benefits

- Single-piece design for Fast and Easy Installation
Reliable and simple attachment avoids unnecessary connector adjustments and provides outstanding performance every time. Saves time and provides cost savings.
- Robust Mechanical Design
Low and consistent intermodulation performance guarantees outstanding system sensitivity.
- Excellent Electrical Performance
Consistent and repeatable low VSWR improves overall system performance and margin and reduces mismatch losses
- Totally Waterproof according to IP 68
Assures safe, long term operation in the harshest of environments.
- RoHS (EU) and CRoHS (China) compliant i.e. can be used on a global basis

Technical features**GENERAL SPECIFICATIONS**

Cable Size	1/2"
Cable Type	Foam Dielectric
Connector Interface	7/8" EIA
Connector Type	RAPID FIT™
Sealing Method	Sealing compound ¹⁾

TESTING AND ENVIRONMENTAL

Waterproof Level	IP68
------------------	------

MECHANICAL SPECIFICATIONS

Plating Outer/Inner	Silver/Silver
Length	85mm (3.4in)
Outer Diameter	57.2mm (2.3in)
Inner Contact Attachment	Self Tapping
Outer Contact Attachment	Spring Finger

ELECTRICAL SPECIFICATIONS

3rd Order IM Product @ 2x20 Watts	<-156	
Maximum Frequency	3.7 GHz	
Frequency Range	VSWR value	Return Loss value
0 < f ≤ 1.0 GHz	1.02	40.1
1.0 < f ≤ 2.7 GHz	1.03	36.6
2.7 < f ≤ 3.7 GHz	1.06	30.7

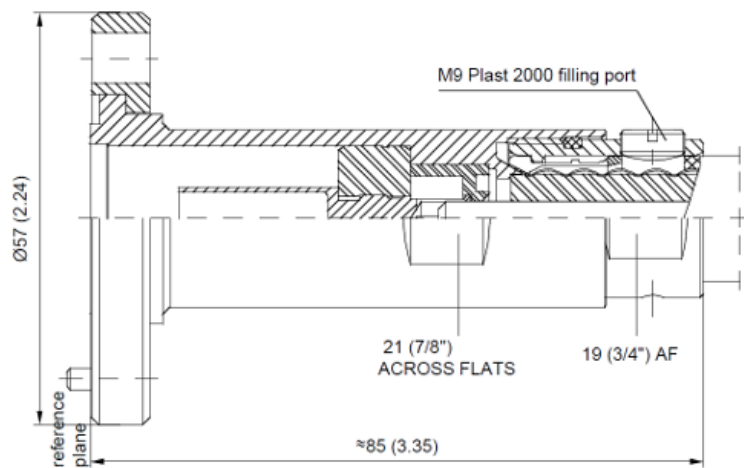
ACCESSORIES

Trimming Tool	TRIM-SET-L12-D01 but with special handling
---------------	--



78EIA-LCF12-060

7/8" EIA Connector for 1/2" Coaxial Cable, RAPID FIT™ Sealing compound



External Document Links

Notes

¹⁾ The sealing compound must be ordered separately.