

**716F-LCF114-C02**

7-16 DIN Female Connector for 1-1/4" Coaxial Cable, OMNI FIT™ standard, O-ring sealing



OMNI FIT™ high performance connectors are designed for use with both CELLFLEX® (copper) and CELLFLEX® Lite (aluminum) cables. They are designed specifically to provide the highest quality connector-cable interface while simplifying and speeding up connector attachment. All RFS connectors are fully tested for mechanical and electrical compliance to industry specifications. The 7-16 connector is the most rugged RF connection meeting all requirements even under the most severe environmental conditions.

Feature / Benefits

- Cost effective two-piece design for safe and easy installation
- Compatible with copper and aluminium cable types i.e. one connector for both outer conductor materials eliminates the risk of faulty connector installation and helps to keep inventory down
- Robust mechanical design for low and consistent intermodulation performance i.e. keeps the mobile network performance up reduces the number of dropped calls and avoids revenue losses
- Superior electrical performance for consistent and repeatable VSWR i.e. ensure network system performance
- Waterproof to IP 68 i.e. no downtime risk, secures revenue
- RoHS (EU) and CRoHS (China) compliant i.e. can be used on a global basis

Technical features**GENERAL SPECIFICATIONS**

| | | | |
|---------------------|---|-------------------|------------------|
| Cable Size | 1 1/4 | | |
| Cable Type | Foam Dielectric, Ultraflexible, Radiating | | |
| Model Series | UCF114-50 Series | LCFS114-50 Series | RCF114-50 Series |
| Connector Interface | 7-16 | | |
| Connector Type | OMNI FIT™ Standard | | |
| Sealing Method | O-ring | | |

TESTING AND ENVIRONMENTAL

| | |
|------------------|------|
| Waterproof Level | IP68 |
|------------------|------|

MECHANICAL SPECIFICATIONS

| | |
|--------------------------|-----------------|
| Plating Outer/Inner | Trimetal/Silver |
| Length | 61mm (2in) |
| Outer Diameter | 49mm (2in) |
| Inner Contact Attachment | Spring Finger |
| Outer Contact Attachment | Spring C-Ring |

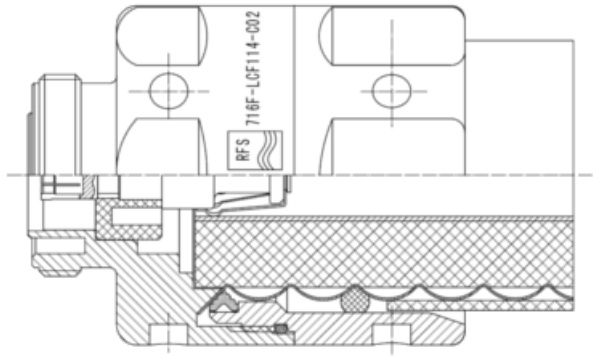
ELECTRICAL SPECIFICATIONS

| | | |
|-----------------------------------|--------------|-------------------|
| Nominal Impedance | 50 ohms | |
| 3rd Order IM Product @ 2x20 Watts | -159 typical | |
| Maximum Frequency | 3.6 GHz | |
| Frequency Range | VSWR value | Return Loss value |
| 0 < f ≤ 1.0 GHz | 1.03 | 36.6 |
| 1.0 < f ≤ 2.7 GHz | 1.05 | 32.3 |
| 2.7 < f ≤ 3.6 GHz | 1.08 | 28.3 |



716F-LCF114-C02

7-16 DIN Female Connector for 1-1/4" Coaxial Cable, OMNI FIT™ standard, O-ring sealing



External Document Links

Notes