

**43MR-SCF12-C03****4.3-10 Right Angle Male Connector for 1/2" SuperFlexible Cable, OMNI FIT™ standard**

OMNI FIT™ high performance connectors are designed for use with both CELLFLEX® (copper) and CELLFLEX® Lite (aluminum) cables. They are designed specifically to provide the highest quality connector-cable interface while simplifying and speeding up connector attachment. All RFS connectors are fully tested for mechanical and electrical compliance to industry specifications. The 4.3-10 connector is an innovative, space-saving RF connection meeting all requirements even under the most severe environmental conditions and not relying on coupling nut torque to meet PIM performance.

Feature / Benefits

- Cost effective two-piece design for safe and easy installation
- Robust mechanical design for low and consistent intermodulation performance i.e. keeps the mobile network performance up, reduces the number of dropped calls and avoids revenue losses
- Standard electrical performance for consistent and repeatable VSWR i.e. ensure network system performance
- Waterproof to IP 68 i.e. no downtime risk, secures revenue
- RoHS (EU) compliant i.e. can be used on a global basis

Technical features**GENERAL SPECIFICATIONS**

Cable Size	1/2
Cable Type	Foam Dielectric Superflexible
Model Series	SCF12-50 Series
Connector Interface	4.3-10 Right Angle
Connector Type	OMNI FIT™ Standard
Sealing Method	O-ring

TESTING AND ENVIRONMENTAL

Waterproof Level	IP68
------------------	------

MECHANICAL SPECIFICATIONS

Plating Outer/Inner	Trimetal/Silver
Length	56.8mm (2.23in)
Outer Diameter	36.4mm (1.4in)
Inner Contact Attachment	Spring Finger
Outer Contact Attachment	Spring O-Ring

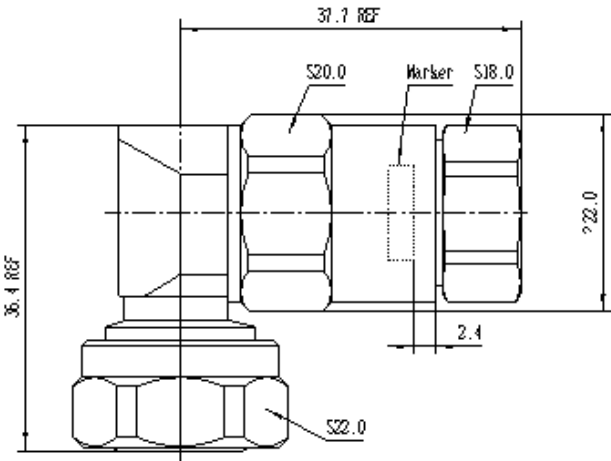
ELECTRICAL SPECIFICATIONS

Nominal Impedance	50 ohms	
3rd Order IM Product @ 2x20 Watts	-162 ; typical -166	
Maximum Frequency	6 GHz	
Frequency Range	VSWR value	Return Loss value
0 < f ≤ 2.2 GHz	1.04	34.1
2.2 < f ≤ 2.7 GHz	1.06	30.7
2.7 < f ≤ 3.7 GHz	1.13	24.3
3.7 < f ≤ 5.0 GHz	1.2	20.8
5.0 < f ≤ 6.0 GHz	1.33	17



43MR-SCF12-C03

4.3-10 Right Angle Male Connector for 1/2" SuperFlexible Cable, OMNI FIT™ standard



External Document Links

Notes