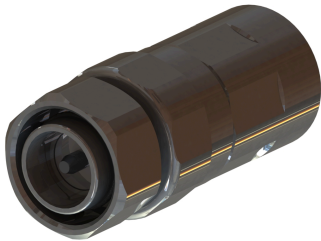




43M-LCF12-E01

4.3-10 Male Straight Connector for 1/2" Coaxial Cable, OMNI FIT™ Premium, O-Ring and compression sealing



OMNI FIT™ high performance connectors are designed for use with both CELLFLEX® (copper) and CELLFLEX® Lite (aluminium) cables. They are designed specifically to provide the highest quality connector-cable interface while simplifying and speeding up connector attachment. All RFS connectors are fully tested for mechanical and electrical compliance to industry specifications.  
The 4.3-10 connector is an innovative, space-saving RF connection meeting all requirements even under the most severe environmental conditions and not relying on coupling nut torque. Sealing against outer conductor and jacket by means of the o-ring and 360° compression fit. Multifunctional, self-lubricating HighTech polymer assembly locks on cable corrugation, avoids electrochemical potential differences and compression-fits to the jacket.

Feature / Benefits

- Ultra high PIM performance i.e. reduced interference leading to high customer satisfaction
- Two-piece design i.e. visual inspection of interlocking leads to improved installation security
- OMNI FIT™ concept i.e. streamlined order management and reduced stock level
- Watertight sealing in mated and unmated condition, i.e. reduced efforts during installation and improved security during operation
- Tri metal alloy plating i.e. extreme resistance against corrosion even under hardest climatic and environmental circumstances
- Multi-thread (Tristart) design i.e. simplified and accelerated tightening process
- RoHS (EU) and CRoHS (China) compliant i.e. can be used on a global basis

Technical features

GENERAL SPECIFICATIONS

Cable Size	1/2
Cable Type	Foam Dielectric
Model Series	LCF12-50 Series, ICA12-50 Series, RCF12-50 Series
Connector Interface	4.3-10
Connector Type	OMNI FIT™ PREMIUM Straight
Sealing Method	O-ring + 360° Compression

TESTING AND ENVIRONMENTAL

Waterproof Level	IP68
------------------	------

MECHANICAL SPECIFICATIONS

Plating Outer/Inner	Tri metal alloy / Silver
Length	54.7mm (2.15in)
Outer Diameter	23mm (0.91in)
Inner Contact Attachment	Basket
Outer Contact Attachment	360° clamping



43M-LCF12-E01

4.3-10 Male Straight Connector for 1/2" Coaxial Cable, OMNI FIT™ Premium, O-Ring and compression sealing

ELECTRICAL SPECIFICATIONS

Nominal Impedance	50 ohms	
3rd Order IM Product @ 2x20 Watts	-163 ; typical -167	
Maximum Frequency	6 GHz	
Frequency Range	VSWR value	Return Loss value
0 < f ≤ 1.0 GHz	1.02	40
1.0 < f ≤ 2.2 GHz	1.03	37
2.2 < f ≤ 2.7 GHz	1.03	36
2.7 < f ≤ 3.8 GHz	1.06	31
3.8 < f ≤ 5.0 GHz	1.11	26
5.0 < f ≤ 6.0 GHz	1.15	23

ACCESSORIES

Trimming Tool	TRIM-SET-L12-D01, TRIM-LCF12-D01-A
---------------	------------------------------------

External Document Links

Notes